
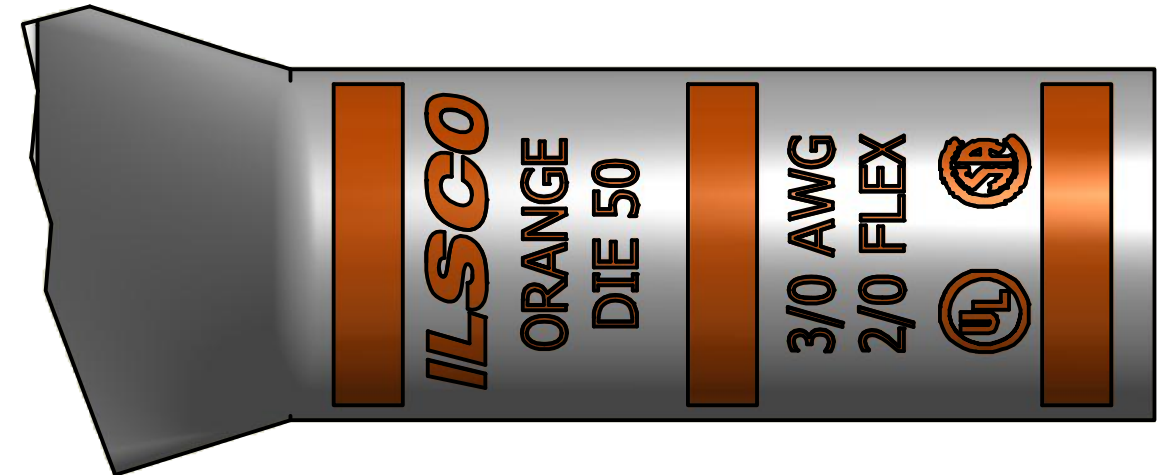
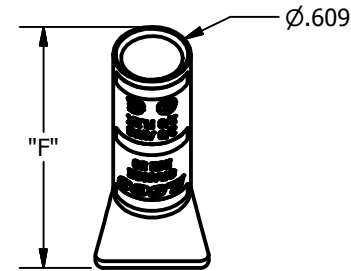
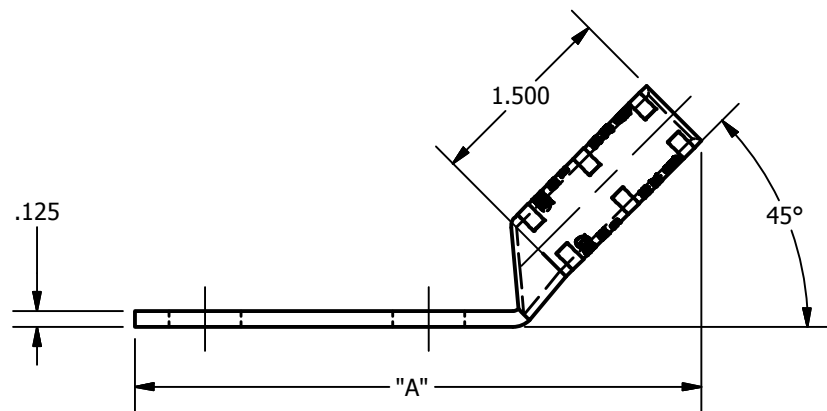
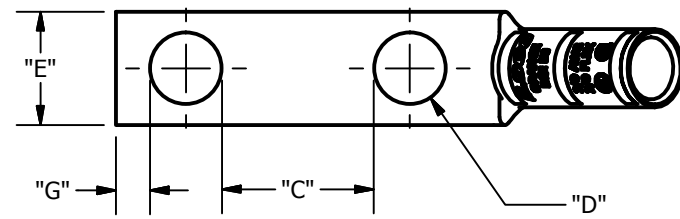


SCREW: NONE	MATERIAL: COPPER	REV: D	 800-776-9775 www.ilSCO.com
CAT. NO.: SEE CHART	PLATING: EL-TIN	DRAWN BY: DW SCALE: NTS	
INFORMATION SHEET: FORM 157	MARKING: SEE CHART	DATE: 6/3/2008 SIZE: B	
			DWG NO: Y0903-D-4
			SHEET: 1 OF 1



DETAIL C
INK MARK TOP AND BOTTOM

CATALOG NUMBER	"A"	"C"	"D"	"E"	"F"	"G"	TANG MARKING
CLNB-3/0-10-12-4	2.774	0.281	0.219	0.885	1.873	0.148	
CLNB-3/0-10-58-4	2.774	0.406	0.219	0.885	1.873	0.148	
CLNB-3/0-10-1116-4	2.774	0.468	0.219	0.885	1.873	0.148	
CLNB-3/0-10-34-4	2.961	0.531	0.219	0.885	1.873	0.148	
CLNB-3/0-10-1-4	3.211	0.781	0.219	0.885	1.873	0.148	
CLNB-3/0-14-12-4	2.774	0.219	0.281	0.885	1.873	0.180	
CLNB-3/0-14-58-4	2.961	0.344	0.281	0.885	1.873	0.180	
CLNB-3/0-14-34-4	2.961	0.469	0.281	0.885	1.873	0.180	
CLNB-3/0-14-1-4	3.211	0.719	0.281	0.885	1.873	0.180	
CLNB-3/0-516-58-4	2.961	0.282	0.343	0.885	1.873	0.180	
CLNB-3/0-516-34-4	3.211	0.407	0.343	0.885	1.873	0.180	
CLNB-3/0-516-78-4	3.211	0.532	0.343	0.885	1.873	0.180	
CLNB-3/0-516-1-4	3.461	0.657	0.343	0.885	1.873	0.180	
CLNB-3/0-516-134-4	4.024	1.407	0.343	0.885	1.873	0.180	
CLNB-3/0-38-34-4	3.211	0.344	0.406	0.885	1.873	0.211	
CLNB-3/0-38-78-4	3.461	0.469	0.406	0.885	1.873	0.211	
CLNB-3/0-38-1-4	3.461	0.594	0.406	0.885	1.873	0.211	
CLNB-3/0-38-116-4	3.461	0.656	0.406	0.885	1.873	0.211	
CLNB-3/0-38-118-4	3.649	0.719	0.406	0.885	1.873	0.211	
CLNB-3/0-38-134-4	4.149	1.344	0.406	0.885	1.873	0.211	
CLNB-3/0-38-2-4	4.524	1.594	0.406	0.885	1.873	0.211	
CLNB-3/0-12-1-4	3.649	0.438	0.562	0.885	1.873	0.265	
CLNB-3/0-12-114-4	4.024	0.688	0.562	0.885	1.873	0.265	
CLNB-3/0-12-112-4	4.149	0.938	0.562	0.885	1.873	0.265	
CLNB-3/0-12-134-4	4.524	1.188	0.562	0.885	1.873	0.265	ILSCO, CLNB-3/0-12-134-4, 1/2 X 1-3/4, 3/0 AWG, 2/0 FLEX, DIE 50, UL, CSA
CLNB-3/0-12-178-4	4.524	1.313	0.562	0.885	1.873	0.265	